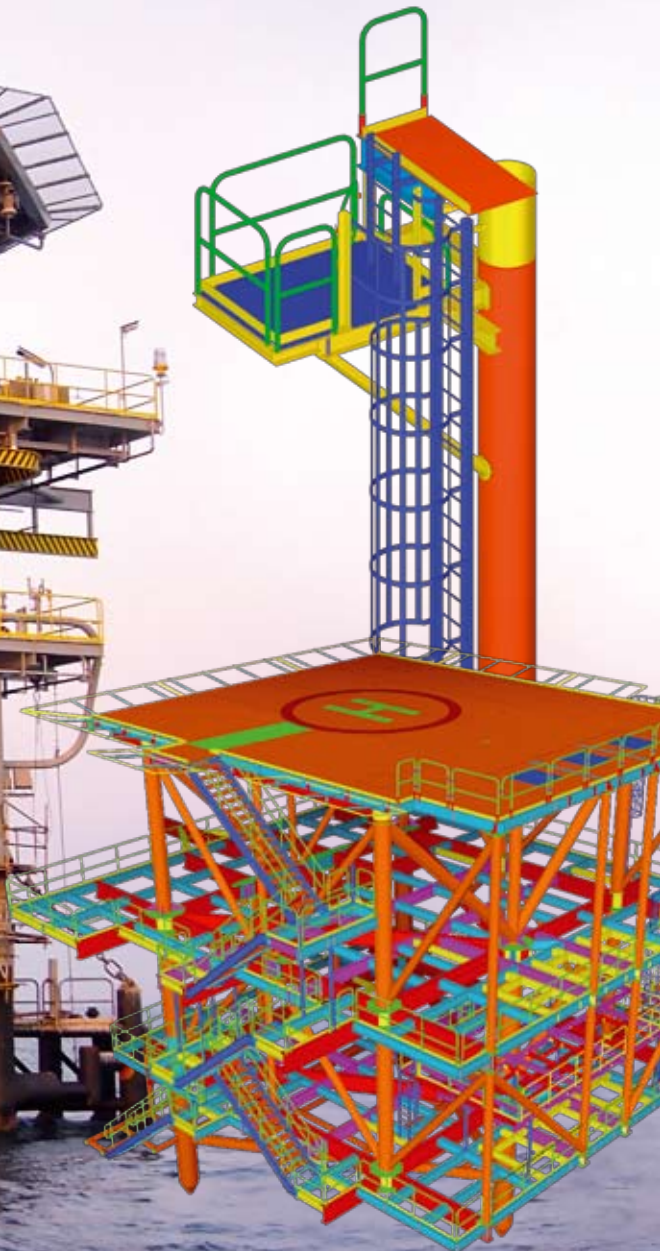




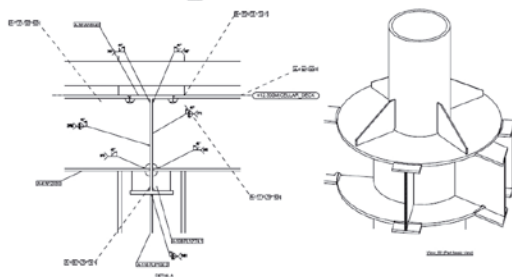
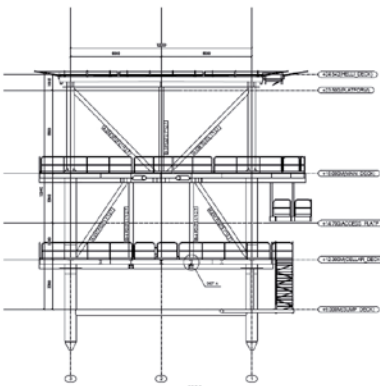
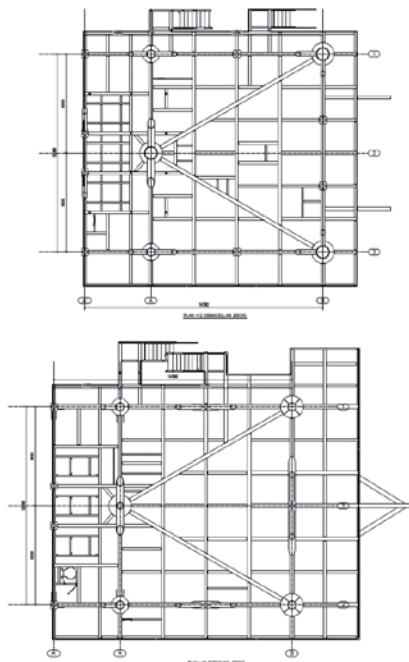
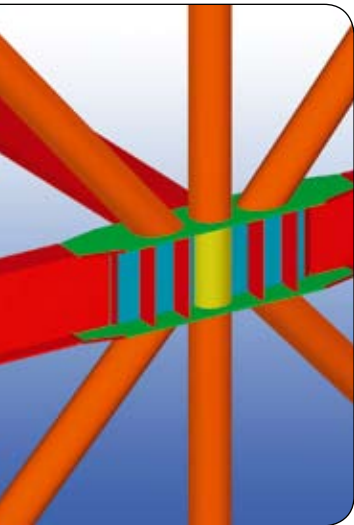
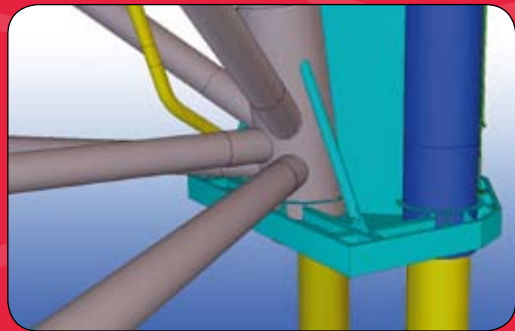
TEKLA® Structures

Offshore



> IDEAL SOLUTION FOR OFFSHORE STRUCTURES

- > *Model and detail offshore steel structures including jackets, decks and flares*
- > *Design, fabricate and manage offshore projects*
- > *Collaborate and share design and detailing data, material requirements and project status through the model from design to erection phase*



- > Tekla Structures software can handle large and complex projects and is an ideal solution for engineers, detailers and fabricators involved in offshore projects.
- > Modeling tools cover all kinds of standard profiles and materials including tubular and elliptical sections as well as individual welds and bolts.
- > Tekla Structures easily integrates to all offshore industry standard packages, such as PDS and PDMS, providing error free design and detailing.
- > The Tekla model can be worked on simultaneously by engineers, project managers and detailers, or any other party who wishes to view or control the model. It is the window to reliable project information during the fabrication process.
- > Quality control is assured as information like engineering drawings are easily accessed and always up-to-date.
- > Tekla Structures takes care of the whole project: from initial concept studies, including 4D visualisation, to the design of structures, safety systems and sustainability, all the way from commissioning and modifications to eventual decommissioning.

CONTACT

Tekla Corporation (HQ)
 Metsänpojankuja 1, P.O. Box 1
 FIN-02131 Espoo, FINLAND
 Tel. +358 30 661 10
 Fax +358 30 661 1500

Find your local TEKLA contact at

www.tekla.com